





# THE 'NEW' NEW MATH

## Traditional

Prior to the Common Core, sixth- and seventh-graders learned to cross-multiply two equivalent fractions to find a missing term. They applied an algorithm without demonstrating a deeper understanding of proportionality.

$$\frac{2}{3} = \frac{4}{b} \rightarrow \frac{2}{3} = \frac{4}{b} \rightarrow 2b = 4 \times 3 \rightarrow 2b = 12 \rightarrow b = 6$$

Problem: Find  $b$ .     Solution: Multiply each numerator with the opposite denominator and solve for  $b$ .

## Common Core

Ignoring the special case of finding an unknown numerator or denominator, Common Core math focuses instead on the concept of proportionality. It moves away from rote procedures like cross-multiplying, allowing students to demonstrate understanding of a new concept and learn how it connects with other areas of math.

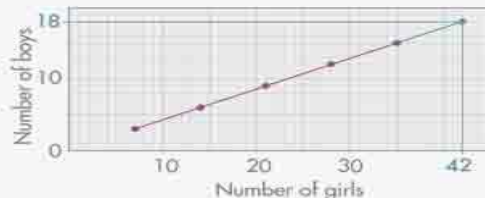
Problem: The ratio of boys to girls in a class is 3:7.  
Use this ratio to create a table with four equivalent ratios.

|       |   |   |               |   |       |   |                   |                   |                   |                   |
|-------|---|---|---------------|---|-------|---|-------------------|-------------------|-------------------|-------------------|
| Boys  | 3 | = | $\frac{3}{7}$ | → | Boys  | 3 | $3 \times 2 = 6$  | $3 \times 3 = 9$  | $3 \times 4 = 12$ | $3 \times 5 = 15$ |
| Girls | 7 |   | $\frac{7}{7}$ |   | Girls | 7 | $7 \times 2 = 14$ | $7 \times 3 = 21$ | $7 \times 4 = 28$ | $7 \times 5 = 35$ |

Solution: Write the ratio as a fraction and create a table with equivalent fractions. Understand that multiplying the numerator and denominator of a fraction by the same number produces a new fraction that equals the original fraction.

Problem continued: Plot the pairs of resulting values on a coordinate plane to visualize the relationship. Using this slope, how many boys are in a class with 42 girls?

Solution: Use the strategy of drawing auxiliary lines (blue) for solving the problem.



## Counting-Up Subtraction Method

You can subtract two numbers by counting up from the smaller number to the larger number. Subtracting this way is called the **counting-up method**.

1. Write the smaller number. Count up to the nearest multiple of 10.
2. Keep counting up by 10s and 100s.
3. Then count up to the larger number.

**Example** Subtract 38 from 325 by counting up. Write the smaller number, 38, and count up to 325. Circle each number that you count up.

$$\begin{array}{r} 38 \\ + \quad \textcircled{2} \\ \hline 40 \end{array} \quad \text{Count up to the nearest 10.}$$
$$\begin{array}{r} 40 \\ + \quad \textcircled{60} \\ \hline 100 \end{array} \quad \text{Count up to the nearest 100.}$$
$$\begin{array}{r} 100 \\ + \quad \textcircled{200} \\ \hline 300 \end{array} \quad \text{Count up to the largest possible hundred.}$$
$$\begin{array}{r} 300 \\ + \quad \textcircled{25} \\ \hline 325 \end{array} \quad \text{Count up to the larger number.}$$

Then, add the numbers you circled:  $2 + 60 + 200 + 25 = 287$   
You counted up by 287.



# Metric Conversion Chart

TABLE 2-2 SI Prefixes

| Prefix | Unit abbreviation | Exponential factor       | Meaning                     | Unit Equivalents<br>Example (Using meters)     |
|--------|-------------------|--------------------------|-----------------------------|--|
| Tera   | T                 | $10^{12}$                | 1 000 000 000 000           | 1 terameter (Tm) = $1 \times 10^{12}$ m        |
| Giga   | G                 | $10^9$                   | 1 000 000 000               | 1 gigometer (Gm) = $1 \times 10^9$ m           |
| Mega   | M                 | $10^6$                   | 1 000 000                   | 1 megameter (Mm) = $1 \times 10^6$ m           |
| Kilo   | k                 | $10^3$                   | 1000                        | 1 kilometer (km) = 1000 m                      |
| Hecto  | h                 | $10^2$                   | 100                         | 1 hectometer (hm) = 100 m                      |
| Deka   | da                | $10^1$                   | 10                          | 1 decameter (dam) = 10 m                       |
|        |                   | <b><math>10^0</math></b> | <b>1</b>                    | <b>1 meter (m)</b>                             |
| Deci   | d                 | $10^{-1}$                | 1/10                        | 1 decimeter (dm) = 0.1 m                       |
| Centi  | c                 | $10^{-2}$                | 1/100                       | 1 centimeter (cm) = 0.01 m                     |
| Milli  | m                 | $10^{-3}$                | 1/1000                      | 1 millimeter (mm) = 0.001 m                    |
| Micro  | $\mu$             | $10^{-6}$                | 1/1 000 000                 | 1 micrometer ( $\mu$ m) = $1 \times 10^{-6}$ m |
| Nano   | n                 | $10^{-9}$                | 1/1 000 000 000             | 1 nanometer (nm) = $1 \times 10^{-9}$ m        |
| Pico   | p                 | $10^{-12}$               | 1/1 000 000 000 000         | 1 picometer (pm) = $1 \times 10^{-12}$ m       |
| Femto  | f                 | $10^{-15}$               | 1/1 000 000 000 000 000     | 1 femtometer (fm) = $1 \times 10^{-15}$ m      |
| Atto   | a                 | $10^{-18}$               | 1/1 000 000 000 000 000 000 | 1 attometer (am) = $1 \times 10^{-18}$ m       |

# MPG TO L/100KM





Go Further

ford.com

**MUSTANG**2018 GT COUPE PREMIUM  
3-DIMENSIONAL SPORTS CAR  
5.0L V8 191 HP  
10-SPEED AUTOMATIC TRANSEXTERIOR  
OXFORD WHITE  
INTERIOR  
EIGHT LTRIM POWER SEATS

J5 104503

## STANDARD EQUIPMENT INCLUDED AT NO EXTRA CHARGE

## EXTERIOR

- EASY FUEL CAPLESS FILLER
- HEADLAMPS - AUTO LAMP (ON/OFF)
- HEADLAMPS - LED WITH SIGNATURE LIGHTING
- HOOD VENT
- LED FOG LAMPS
- MIRRORLESS SIDE FOLD DUAL PWS
- HEATED WITH TURN SIGNALS
- FOXY PROJECTION LAMPS
- QUAD TIP DUAL EXHAUST
- TAILLAMPS - LED WITH SEQUENTIAL TURN SIGNAL
- WIPERS - AUTOMATIC

## INTERIOR

- 17" LCD DIAL-INSTR CLUSTER
- AMBIENT LIGHTING
- AUTODIM REARVIEW MIRROR
- DUAL SLIM VIEWFINDER MIRRORS
- DUAL-ZONE ELECTRONIC AUTO CLIMATE CONTROL
- LEATHER TRIMMED SEATS
- LEATHER WRAPPED STEERING WHEEL
- WIPERLESS WINDSHIELD CONTROL
- HOMER LOCKS AND WINDOW
- HORNPOINTS (2)
- SMART CHARGING USB PORTS
- SOFT FOLD REAR SEAT
- TELESCOPE STEERING COLUMN
- WINDOWS - GLOBAL OPEN

## FUNCTIONAL

- AM/FM SINGLE CD/MP3 PLAYER
- ELECTRONIC PARK ASSIST STEER
- ENGINE OIL COOLER
- INDEPENDENT REAR SUSPENSION
- INTELLIGENT ACCESS WITH MYKEY
- BUTTON START
- LIMITED SLIP REAR AXLE
- MIRRORS
- REAR VIEW CAMERA
- REVERSE SENSING SYSTEM
- SELECTABLE DRIVE MODES
- SPYDER WIN TOUGH SCREEN
- TRACK APP™
- DRIVER GARAGE DOOR OPENER

## SAFETY/SECURE

- ACTIVE NOISE CONTROL
- AIRBAGS - DRIVER/PASSENGER KNEE
- AIRBAGS - DUAL STAGE FRONT
- AIRBAGS - FRONT SEAT
- MOUNTED SIDE IMPACT
- AIRBAGS - SIDE AIR CURTAIN
- INCH TIRE PRESS MONITOR SYS
- LATCH CHILD SAFETY SYSTEM
- PERIMETER ALARM
- SECURELOCK PASS-ANTI-THEFT
- SEAT POST CRASH ALERT SYS

## WARRANTY

- 2YR/50,000 BUMPER TO BUMPER
- 5YR/100,000 POWERTRAIN
- 5YR/100,000 ROADSIDE ASSIST

## INCLUDED ON THE VEHICLE

(MSRP)

- EQUIPMENT GROUP 401A
- PREMIER TRIM W/BLD ACCENT GRP
- MOOD-LIGHT TALKING GREEN NAV SYS
- FORM FLOORMATS W/OCC STECH

2,390.00

## OPTIONAL EQUIPMENT/OTHER

1,895.00

- 10-SPEED AUTOMATIC TRANS
- SAFE & SMART PACKAGE
- ADAPTIVE CRUISE CONTROL
- BLU W/CRUISE-TRAFIC ALERT
- ENHANCED SECURITY PACKAGE
- ACTIVE ANTI-THIEF SYSTEM
- WHEEL LOCKING KIT
- FRONT LICENSE PLATE BRACKET
- ACTIVE NVL V6 PERFORMANCE EXH
- 50 STATE EMISSIONS
- SHAKER W/BLD ALBERTS SYS W/HD
- 12 SPEAKER SYSTEM
- GT PERFORMANCE PACKAGE
- 19 SPEED BLACK PNTD ALUM W/BL
- 2018 FORD/MOTOROLA SUMMER TDE
- PERFORMANCE REAR W/BL
- 3.00 AUTO LIMITED SLIP AXLE
- SHAKE-RIDE DAMPING SYSTEM

1,499.00

995.00

995.00

995.00

995.00

995.00

995.00

995.00

995.00

995.00

995.00

995.00

995.00

995.00

995.00

995.00

995.00

995.00

995.00

995.00

995.00

995.00

995.00

995.00

995.00

995.00

995.00

995.00

995.00

995.00

995.00

995.00

995.00

995.00

995.00

995.00

995.00

995.00

995.00

## PRICE INFORMATION

(MSRP)

## BASE PRICE

\$23,000.00

## TOTAL OPTION/OTHER

\$2,160.00

## TOTAL VEHICLE &amp; OPTIONS/OTHER

\$25,160.00

## DESTINATION &amp; DELIVERY

900.00



|      |                       |  |                    |
|------|-----------------------|--|--------------------|
| MSRP |                       | <b>TOTAL MSRP</b>  | <b>\$53,160.00</b> |
| MSRP | FLAT ROCK             | This dealer is offered pursuant to the Federal Automobile Information Disclosure Act. Gasoline, License, and Title Fees, Sales and Local taxes are not included. Dealer installed options or accessories are not included unless listed above. |                    |
| MSRP | 2018 F - 33-0004-0T-2 |  |                    |
| MSRP | RAIL                  | HJ081 H RA X 815 002843 00 26 17   |                    |

EPA DOT

## Fuel Economy and Environment



Gasoline Vehicle



## Fuel Economy

**19** MPG  
combined city/hwy

16 city  
25 highway

5.3 gallons per 100 miles

2018 EPA Fuel Economy Estimates  
EPA DOT The best-in-class-rated 100 MPGe

## You spend

**\$2,750**

more in fuel costs over 5 years compared to the average new vehicle.

## Annual fuel cost

**\$1,900**

## Fuel Economy &amp; Greenhouse Gas Rating

EPA DOT

## Smog Rating

EPA DOT



The vehicle emits 488 grams CO<sub>2</sub> per mile. The chart emits 10 grams per mile below 400. The chart is based on the EPA's Greenhouse Gas Rating system. The chart is based on the EPA's Greenhouse Gas Rating system. The chart is based on the EPA's Greenhouse Gas Rating system.

Annual results will vary for many reasons, including driving conditions and how you drive and maintain your vehicle. The average new vehicle gets 27 MPG and costs \$1,750 in fuel over 5 years. Cost estimates are based on 15,000 miles per year at \$3.00 per gallon. MSRP is used for purchase price comparison. Vehicle emissions are a significant source of climate change and smog.

## fuelconomy.gov

Calculates personalized estimates and compares vehicles



Smartphone QR Code



## GOVERNMENT 5-STAR SAFETY RATINGS

## Overall Vehicle Score

Not Rated

Based on the combined ratings of frontal, side and rollover. Should ONLY be compared to other vehicles of similar size and weight.

## Frontal Crash

Driver Passenger

Not Rated

Based on the risk of injury in a frontal impact. Should ONLY be compared to other vehicles of similar size and weight.

## Side Crash

Front seat Rear seat

Not Rated

Based on the risk of injury in a side impact.

## Rollover

★★★★★

Based on the risk of rollover on a single-vehicle crash.

Star ratings range from 1 to 5 stars (★★★★★), with 5 being the highest.

Source: National Highway Traffic Safety Administration (NHTSA).

www.safercar.gov or 1-888-327-4236



Scan this code to experience this vehicle or text #J5104503 to 49000

or visit ford.com/whatsnew

Standard messaging & rates may vary. ©2017 Ford



Visit us Ford Power! The only extended service plan fully backed by Ford and authorized at every Ford dealership in the U.S., Canada and Mexico. See your Ford dealer for additional details. To visit www.FordService.com for more information.



Choose the vehicle you want. Whether you decide to lease or finance, you'll find the choices that are right for you. See your Ford Dealer for details or visit www.Ford.net.com





# MUSTANG

2021 GT COUPE PREMIUM  
4-PASSENGER SPORTS CAR  
5.0L TI-VCT V8; GT 460HP  
10-SPEED AUTO TRANSMISSION

EXTERIOR  
SHADOW BLACK  
INTERIOR  
CERAMIC LEATHER-TRIM PWR STS

M5 110914

### STANDARD EQUIPMENT

STANDARD EQUIPMENT INCLUDED AT NO EXTRA CHARGE IN THE BASE PRICE BELOW

#### EXTERIOR

- LED HEADLAMPS
- LED TAIL LIGHTS
- DAYTIME RUNNING LIGHTS
- FOG LAMPS
- EXHAUST, DUAL BRIGHT TIPS
- MIRRORS, DUAL POWER HEATED

#### INTERIOR

- AM/FM, MP3
- CONSOLE, WARMREST
- FLOOR MATS, FRONT
- ILLUMINATED ENTRY
- LEATHER TRIMMED SEATS
- MIRROR, AUTODIMMING
- SIRIUS SAT RADIO W/ 3 MONTH PRE-PAID SUBSCRIPTION
- STEER WHEEL, LTH W/ CONTROLS

#### FUNCTIONAL

- A/C, DUAL ZONE ELECTRONIC
- ADVANCETRAIC CONTROL
- BRAKES, ANTI-LOCK
- BRAKES, POWER 4-WHL DISC
- ELIC PWR ASST STEERING
- FORDPASS™ CONNECT
- INTELLIGENT ACCESS
- MYKEY
- REVERSE CAMERA SYSTEM
- REVERSE SENSING SYSTEM
- SYNC3

#### SAFETY/SECURITY

- AIRBAGS, DRIVER & PASS
- DRIVER SIDE AIR BAG
- FRONT PASS SIDE AIR BAG
- LATCH CHILD RESTRAINT SYS
- PERIMETER ALARM
- SECURELOCK ANTI-THEFT SYS
- SOS POST CRASH ALERT SYS
- TIRE PRESSURE MONITOR SYS

#### WARRANTY

- 3 YR/60,000 KM BASIC
- 5 YEAR/100,000 KM POWERTRAIN
- ROADSIDE ASSISTANCE 24 HRS

### INCLUDED ON THIS VEHICLE

(MSRP)\*

#### EQUIPMENT GROUP ADDA

#### OPTIONAL EQUIPMENT/OTHER

- 2021 MODEL YEAR FEDERAL EXCISE TAX 100.00
- CLIMATE CTRL FRT SEAT HTD/CLD 1,750.00
- 10-SPEED AUTO TRANSMISSION P256/4R119 W-RATED TIRE BLACK ACCENT PACKAGE 1,800.00
- 13R8.5 EBONY BLACK PNTD AL WL FORD SAFE & SMART PACKAGE 1,000.00
- ADAPTIVE CRUISE CONTROL, VOICE-ACT TOUCH-SCR NAV SYS 3.15 RATIO LIMITED SLIP AXLE 50 STATE EMISSIONS NO CHARGE

NO CHARGE



#### PRICE INFORMATION

BASE PRICE \$48,710.00  
TOTAL OPTIONS/OTHER 4,452.00  
TOTAL VEHICLE & OPTIONS/OTHER DESTINATION & DELIVERY \$53,162.00

**\*THIS VEH. NOT INTENDED FOR SALE OR REGISTRATION IN US\*  
RETAIL PRICES EXCLUDE GST/HST**

Canada

ENERGUIDE



Gasoline Vehicle  
Véhicule à essence

### Fuel Consumption / Consommation de carburant

**12.8** L/100 km  
combined/combinaison  
**22** ml/gal

**15.3** city  
ville

**9.8** highway  
route

Annual fuel COST  
for an annual distance of 20,000 km, at an average fuel price of \$1.25 per litre

**\$ 3 200**

Coût annuel en carburant

pour une distance annuelle de 20 000 km, à un prix moyen du carburant de 1.25 \$ par litre

Subcompact cars range from /  
Les voitures sous-compactes font  
entre  
**2.1 - 16.7** L<sub>g</sub>/100 km

L<sub>g</sub> is gasoline (see equivalent)  
L<sub>g</sub> signifie (voir l'équivalent) essence

### Carbon Dioxide Rating / Indice de dosage de carbone



Échelle des émissions de CO<sub>2</sub> en g/km

### Smog Rating / Indice de Smog



Échelle de la pollution atmosphérique

Estimates are based on Government of Canada approved criteria and testing methods. Vehicle's actual fuel consumption will vary.

Estimations établies selon des méthodes d'essai et des critères approuvés par le gouvernement du Canada. La consommation de carburant réelle du véhicule variera.

For more information visit

[vehicles.nrcan.gc.ca](http://vehicles.nrcan.gc.ca)

Pour plus d'information visitez

[vehicules.nrcan.gc.ca](http://vehicules.nrcan.gc.ca)



### U.S. GOVERNMENT SAFETY RATINGS COTES DE SECURITE DU GOUVERNEMENT AMERICAIN

|   |  |
|---|--|
| Overall Vehicle Score /<br>Cote globale du véhicule | ★★★★★  |
| Frontal Crash<br>Collision frontale                 | ★★★★★<br>Driver / Conducteur<br>Passenger / Passager           |
| Side Crash<br>Collision latérale                    | ★★★★★<br>Front seat / Siège avant<br>Rear seat / Siège arrière |
| Rollover / Capotage                                 | ★★★★★  |

Star ratings range from 1 to 5 stars (★★★★★), with 5 being the highest.  
Les cotes varient de 1 à 5 étoiles (★★★★★), 5 étant la cote la plus élevée.



The FordPass Connect™ modem is active and sending vehicle data (e.g., diagnostics) to Ford. See in-vehicle settings for connectivity options.

FordPass Connect™ service and FordPass™ App required for certain remote features (see Terms for more information). Connected services and related features functionality is subject to compatible AT&T network availability. Existing technology / cellular networks may affect functionality and availability, as determined provision of some features, prohibiting them from functioning. Messages and data rates may apply. See your local Ford website for our privacy policy.

Source: U.S. National Highway Traffic Safety Administration  
For more information / Pour de plus amples renseignements  
[www.safercar.gov](http://www.safercar.gov)



|   |                           |  |           |  |
|---|---------------------------|--|-----------|--|
| SOLD THROUGH A<br>Mike Knapp Ford Sales Limited<br>607 Niagara Street<br>Welland ON CAN L3C 1L9 | B80 702                   | DEALER NO./CONCESSIONNAIRE<br>RY7M     | B80 702   | <b>TOTAL MSRP \$54,960.00</b>                  |
| SHIP TO: IF OTHER THAN WELLS TOLL<br>EXPRESS A. (CALL THE U.S. CUSTOMER)                        | SHIP TWO<br>TERMINAL (UK) | POUL ASSEMBLY PLANT<br>UKAN OR MONTAGE | FLAT ROCK | * MANUFACTURER'S SUGGESTED RETAIL PRICE - MSRP |

\* NOTE: THIS PRICE HAS BEEN DEVELOPED AS A MODEL. DEALERS MAY VARY FOR LEGS AND ARE NOT UNDER ANY OBLIGATION TO ACCEPT THIS SUGGESTED RETAIL PRICE.

|                         |  |        |               |
|-------------------------|--|--------|---------------|
| SHIP THROUGH EXPRESS OR | SHIP THREE (IF COUNTRY<br>SOURCE OR TRANSPORT) | ITEM # | B8-0046 Q/T 2 |
|-------------------------|--|--------|---------------|

MB031 N RE 2X 115 001501 02 03 21

Inspire by Ford Protect! The only extended service plan fully backed by Ford and licensed at every Ford dealership in the US and Canada. See your Ford dealer for additional details, or visit [www.fordcpa.com](http://www.fordcpa.com) for more information.



Personalize your vehicle with Ford Custom Accessories. Genuine Ford Accessories are engineered for your vehicle and can be included under the Ford New Vehicle Limited Warranty. Certain conditions, limitations and exclusions apply. See your Dealer for details.







Built In Christ Jesus:

Everything has changed;  
You are a “New Humanity”  
(Ephesians 4:17-24)

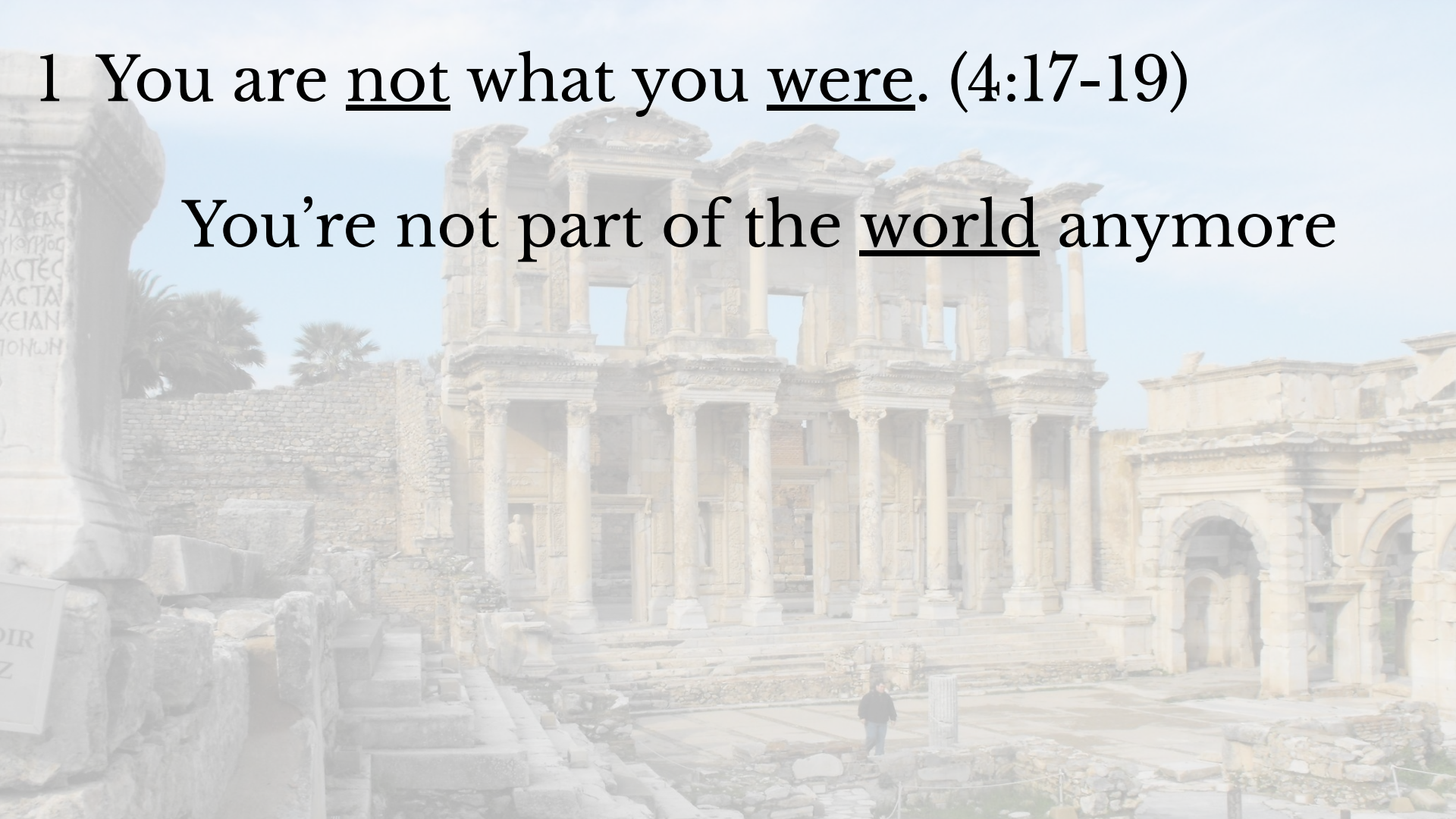
1 You are not what you were. (4:17-19)





1 You are not what you were. (4:17-19)

You're not part of the world anymore

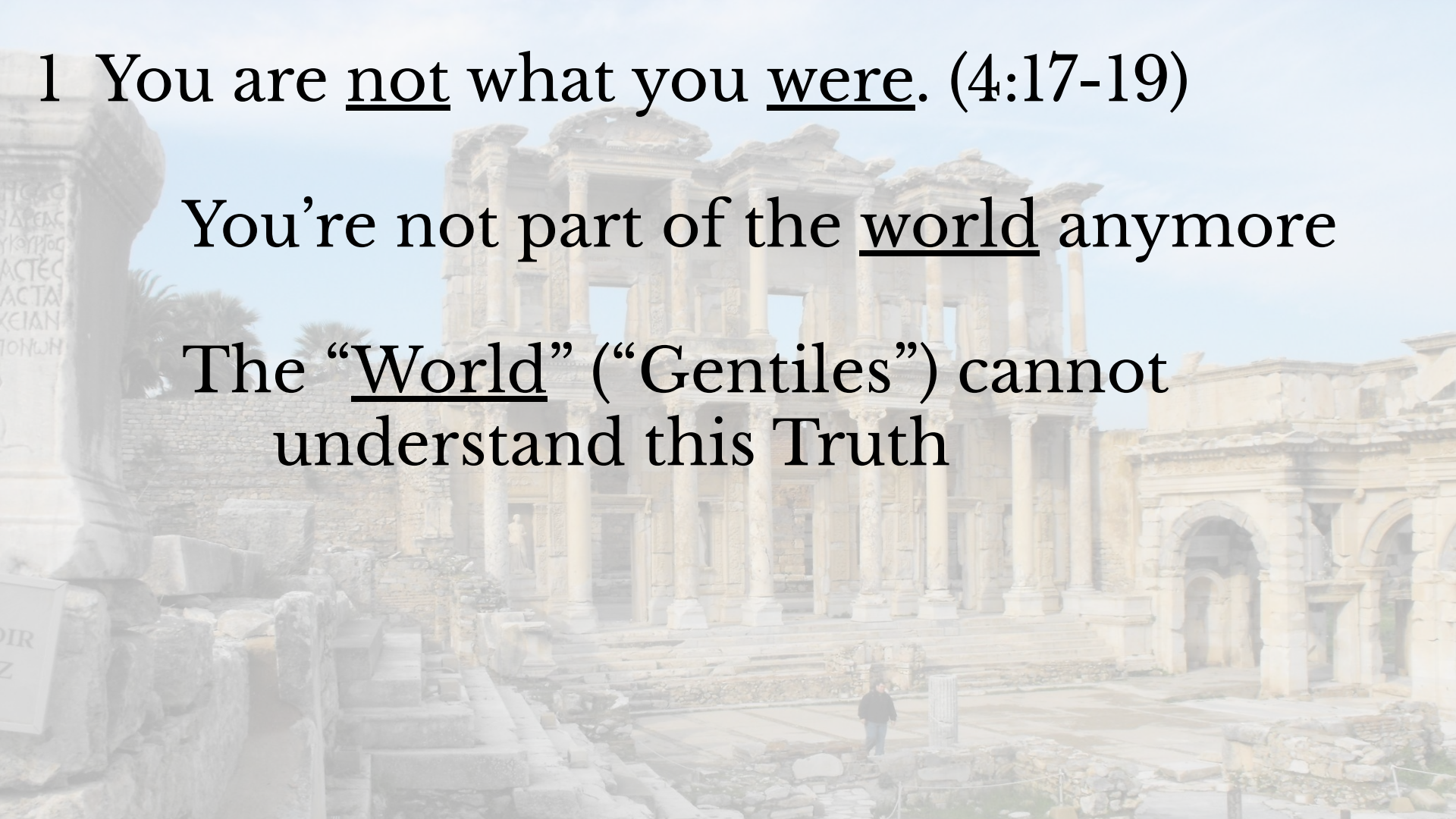




1 You are not what you were. (4:17-19)

You're not part of the world anymore

The "World" ("Gentiles") cannot understand this Truth



1 You are not what you were. (4:17-19)

You're not part of the world anymore

The "World" ("Gentiles") cannot  
understand this Truth  
They've become calloused



1 You are not what you were. (4:17-19)

You're not part of the world anymore

The "World" ("Gentiles") cannot understand this Truth

They've become calloused

They've been darkened in their mind

1 You are not what you were. (4:17-19)

You're not part of the world anymore

The "World" ("Gentiles") cannot understand this Truth

They've become calloused

They've been darkened in their mind

They have become blinded



1 You are not what you were. (4:17-19)

You're not part of the world anymore

The "World" ("Gentiles") cannot understand this Truth

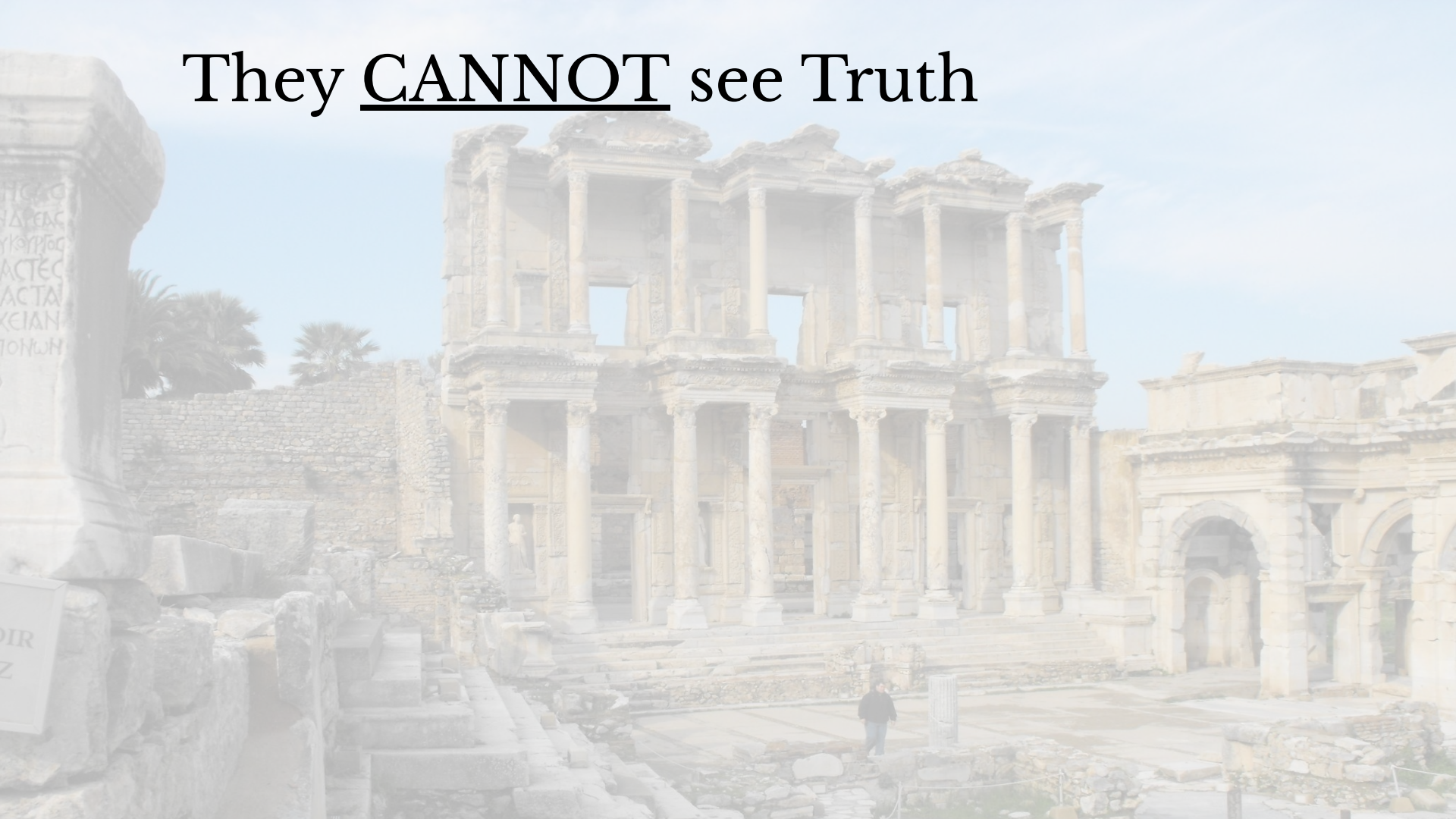
They've become calloused

They've been darkened in their mind

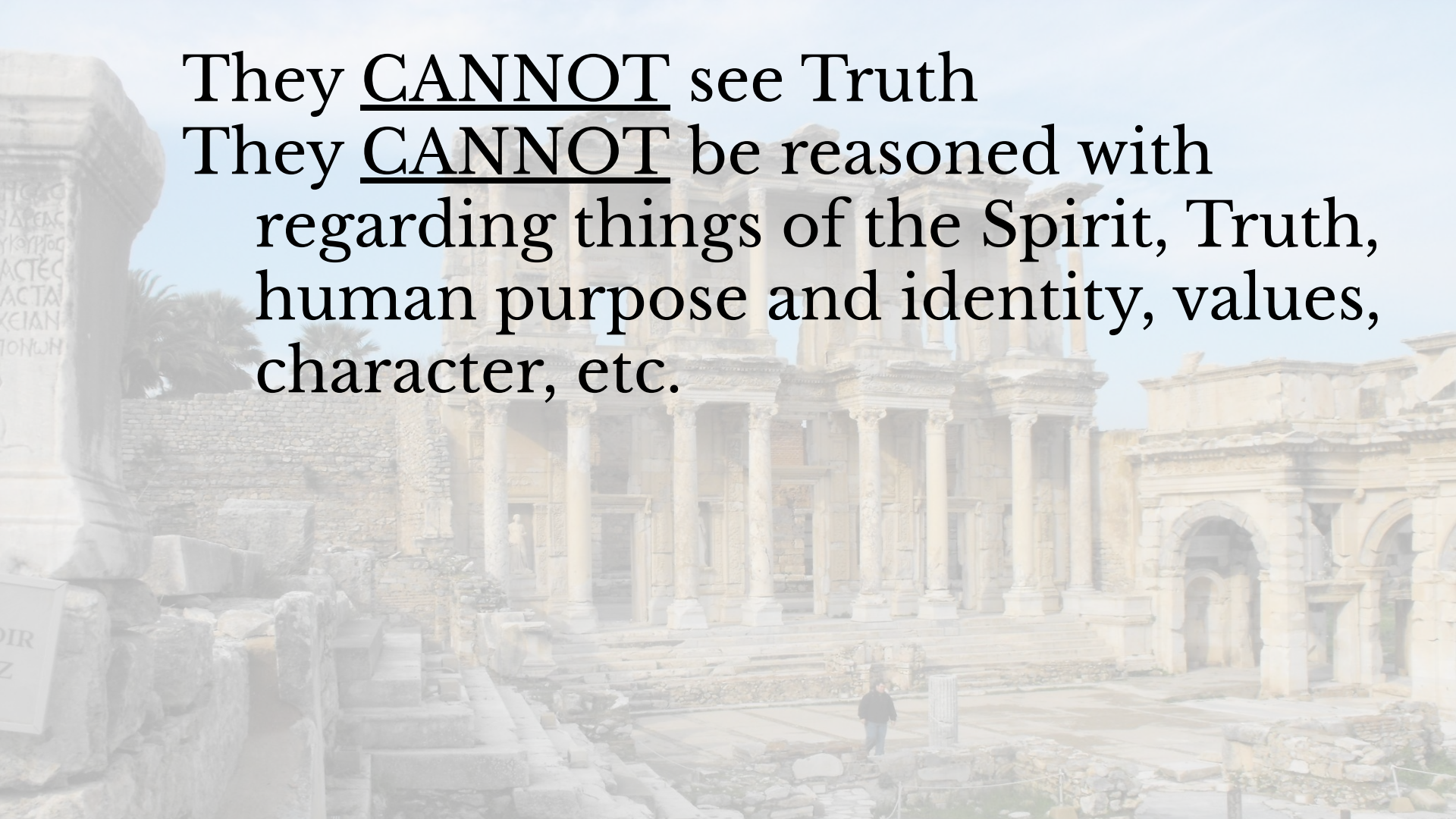
They have become blinded

Cf. Romans 1:18-32; Prov. 4:18-19

They CANNOT see Truth





The background image shows a vast archaeological site with numerous ancient stone structures. In the center, there is a large, well-preserved temple with a portico supported by several tall, fluted columns. To the left, a large, partially ruined column stands prominently, with some Greek or Latin inscriptions visible on its surface. The ground is a mix of dirt paths and stone foundations. A small figure of a person is visible in the distance, providing a sense of scale to the massive ruins. The overall scene is bathed in a soft, hazy light, suggesting an overcast day or a misty atmosphere.

They CANNOT see Truth  
They CANNOT be reasoned with  
regarding things of the Spirit, Truth,  
human purpose and identity, values,  
character, etc.

The background of the slide is a faded, light-colored photograph of ancient ruins. On the left, there is a large stone column with some faint, illegible inscriptions. In the center and right, there are several classical buildings with columns and arches. A small figure of a person is visible in the lower center, walking through the ruins. The overall scene is bright and somewhat hazy, suggesting an outdoor setting with a clear sky.

They CANNOT see Truth

They CANNOT be reasoned with  
regarding things of the Spirit, Truth,  
human purpose and identity, values,  
character, etc.

They need Christ to lift the veil of  
darkness

Cf. 2 Corinthians 3:12-18





They CANNOT see Truth

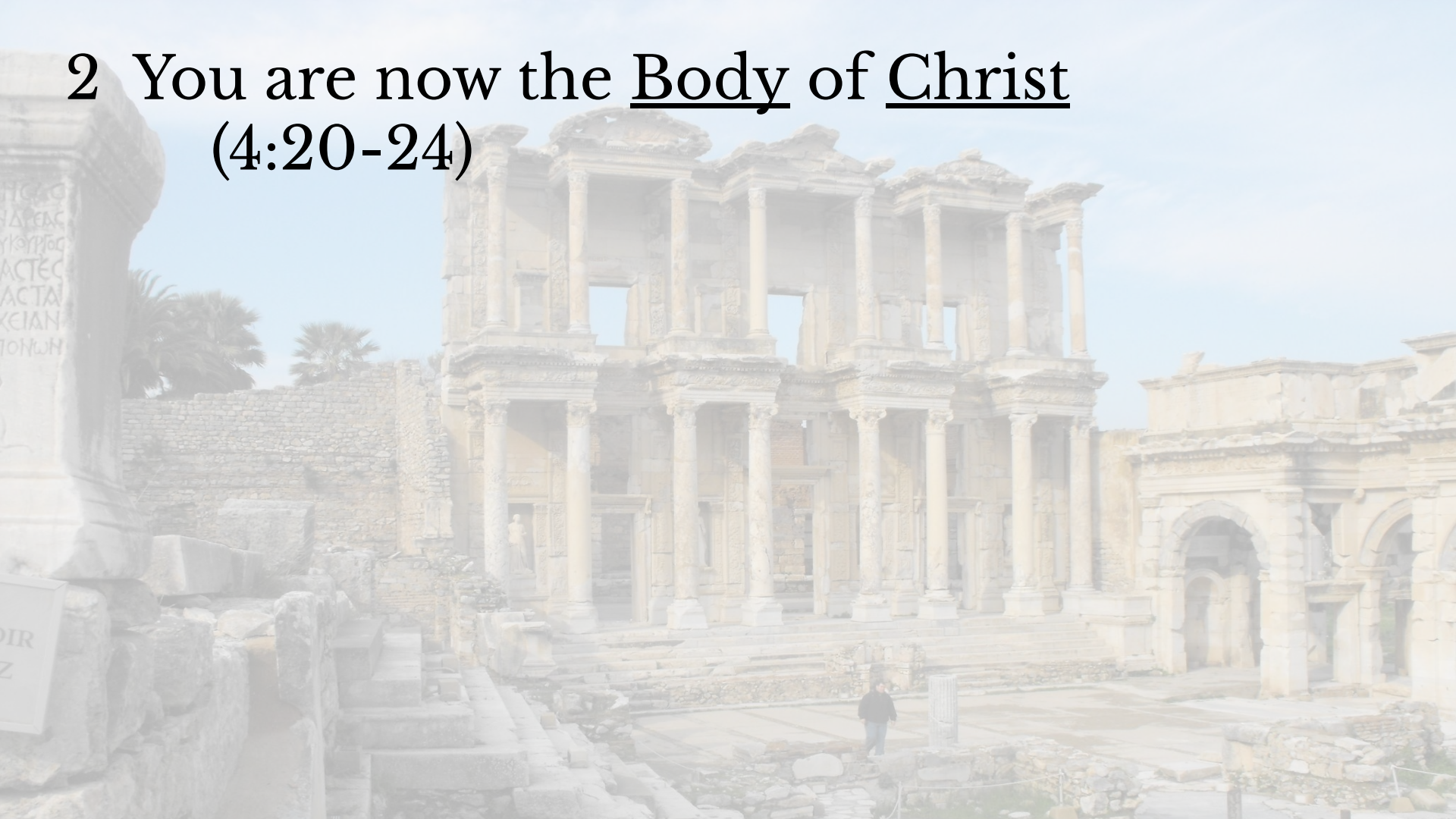
They CANNOT be reasoned with  
regarding things of the Spirit, Truth,  
human purpose and identity, values,  
character, etc.

They need Christ to lift the veil of  
darkness

Cf. 2 Corinthians 3:12-18

Only regeneration and renewal can  
help them now (Titus 3:3-9)

## 2 You are now the Body of Christ (4:20-24)



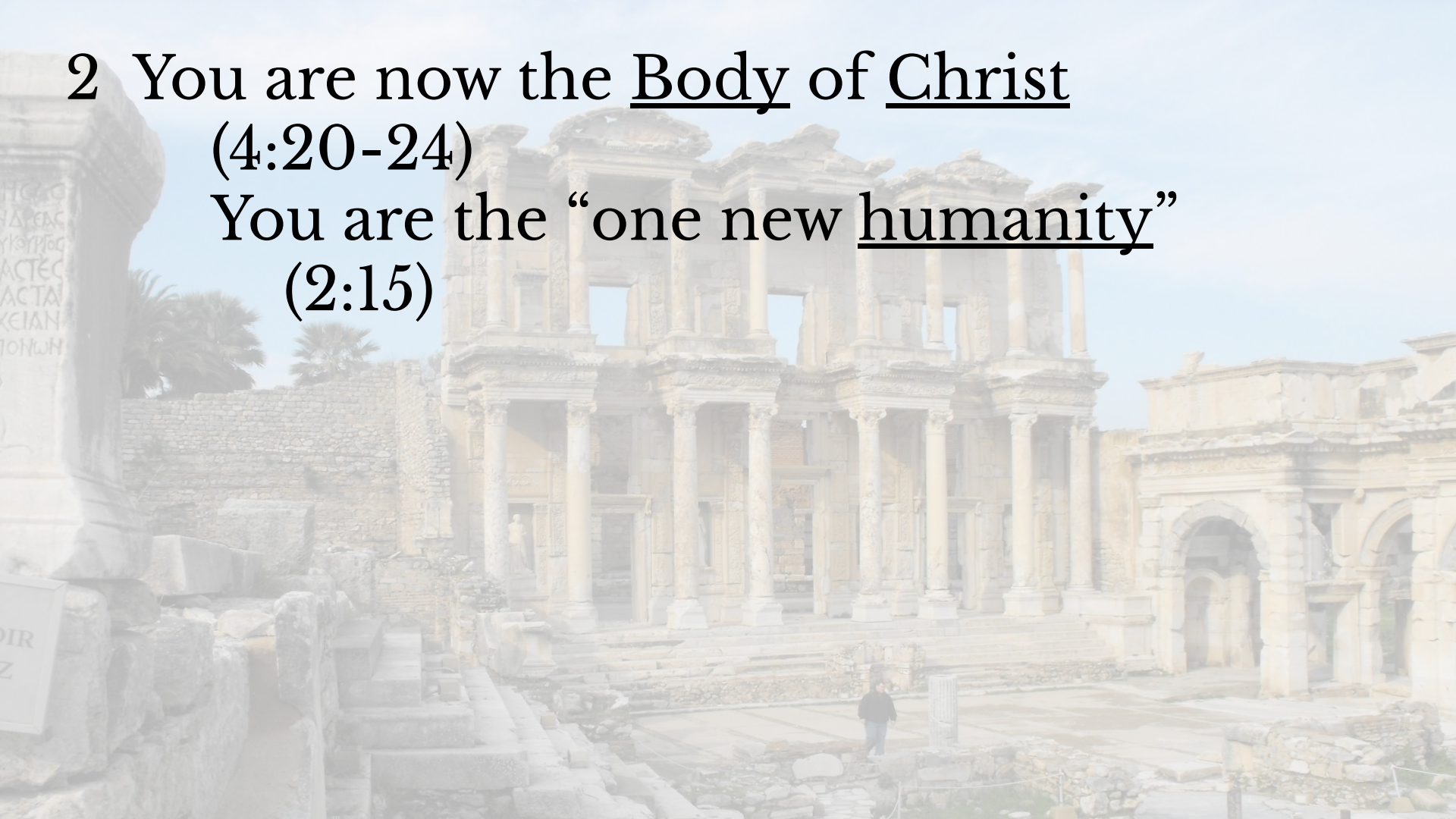


2 You are now the Body of Christ

(4:20-24)

You are the “one new humanity”

(2:15)



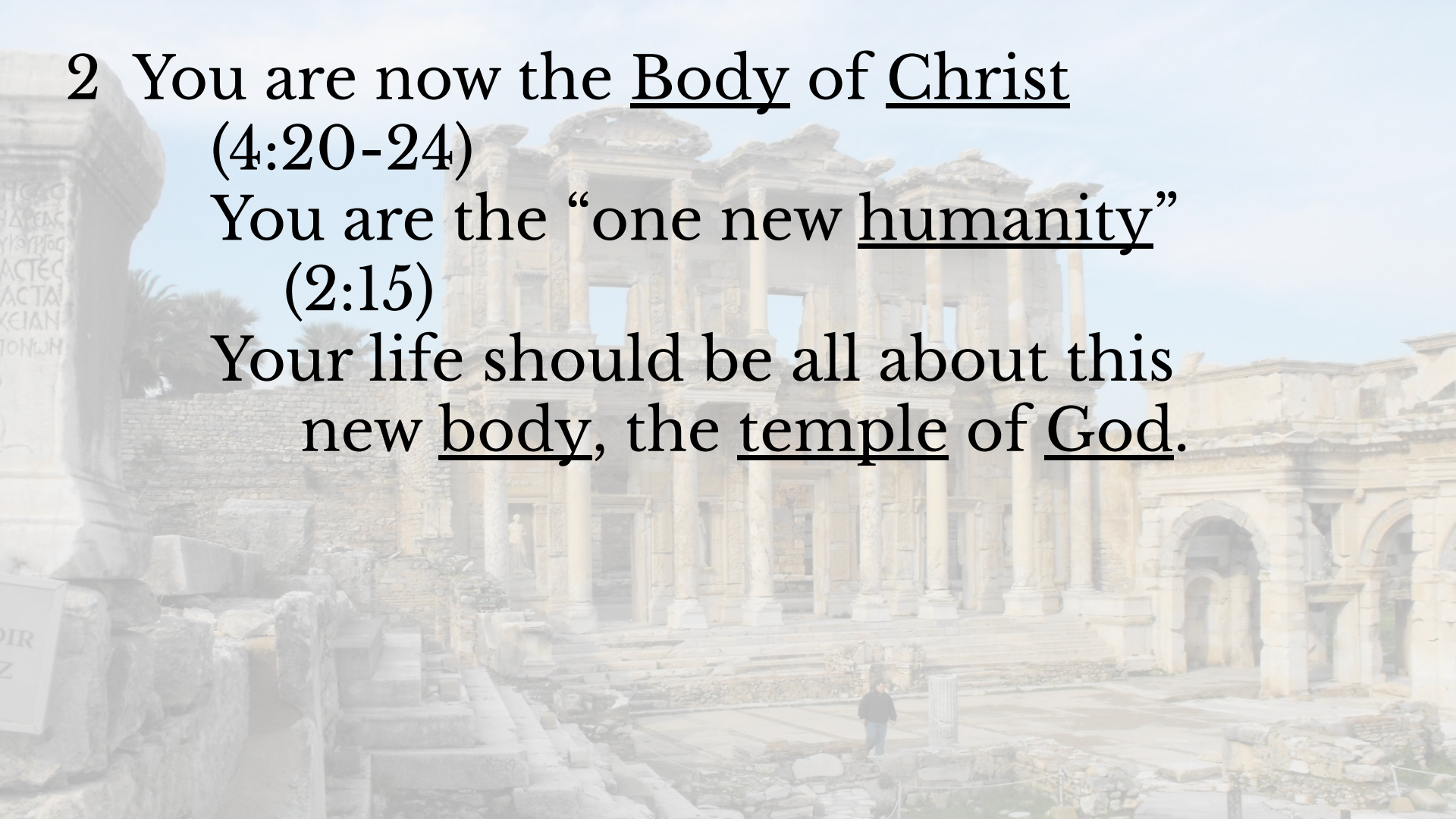
2 You are now the Body of Christ

(4:20-24)

You are the “one new humanity”

(2:15)

Your life should be all about this  
new body, the temple of God.







2 You are now the Body of Christ  
(4:20-24)

You are the “one new humanity”  
(2:15)

Your life should be all about this  
new body, the temple of God.  
Everything you say and do should  
reflect your membership in the  
Body of Christ.

2 You are now the Body of Christ  
(4:20-24)

You are the “one new humanity”  
(2:15)

Your life should be all about this  
new body, the temple of God.  
Everything you say and do should  
reflect your membership in the  
Body of Christ.

Your understanding of Truth is  
defined by this relationship



# APPLICATION:



APPLICATION:

Ponder this “new corporate humanity”





# APPLICATION:

Ponder this “new corporate humanity”  
What feels uncomfortable about it?  
(i.e. - “*We need each other?*”)



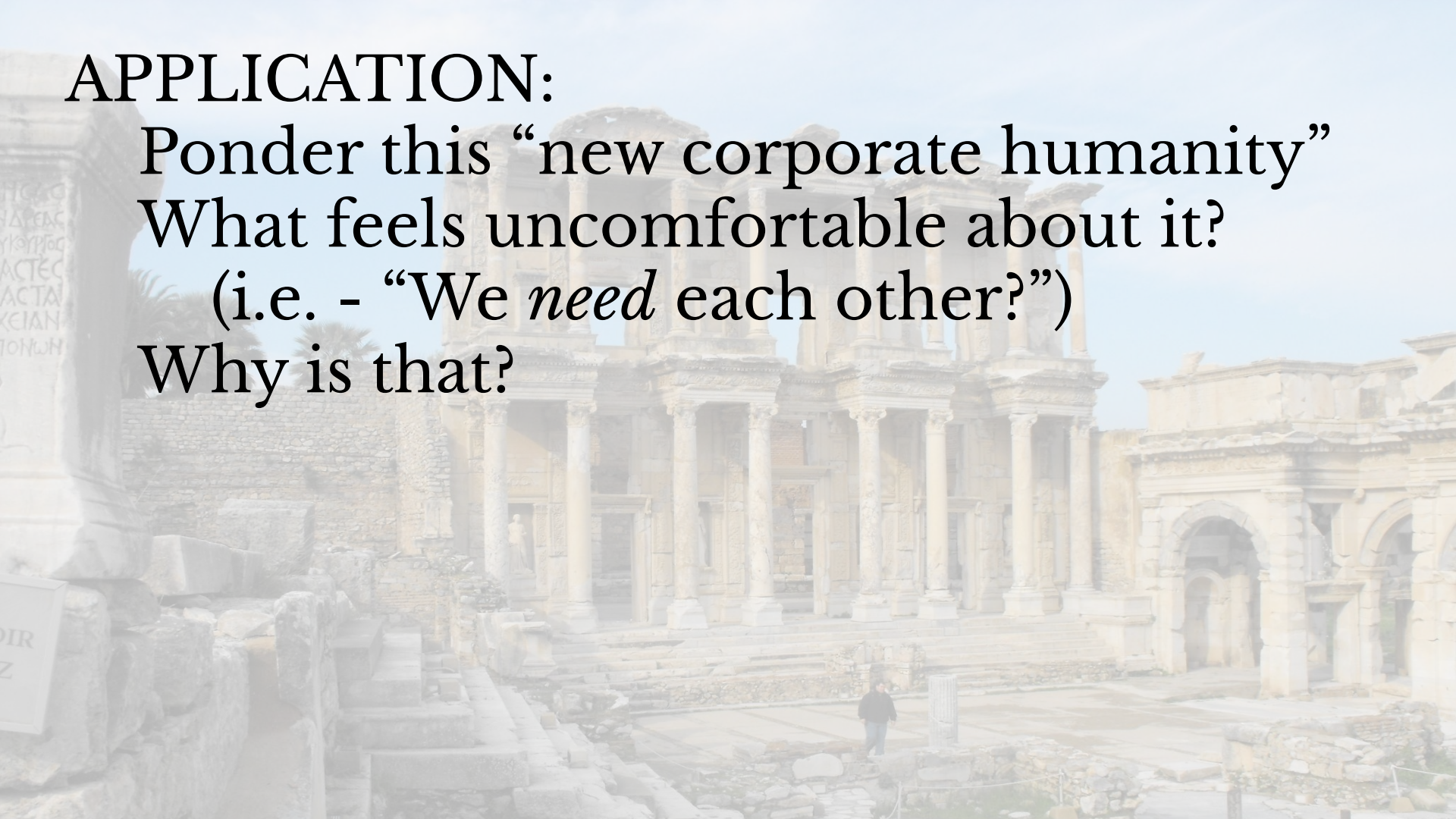
# APPLICATION:

Ponder this “new corporate humanity”

What feels uncomfortable about it?

(i.e. - “*We need each other?*”)

Why is that?





# APPLICATION:

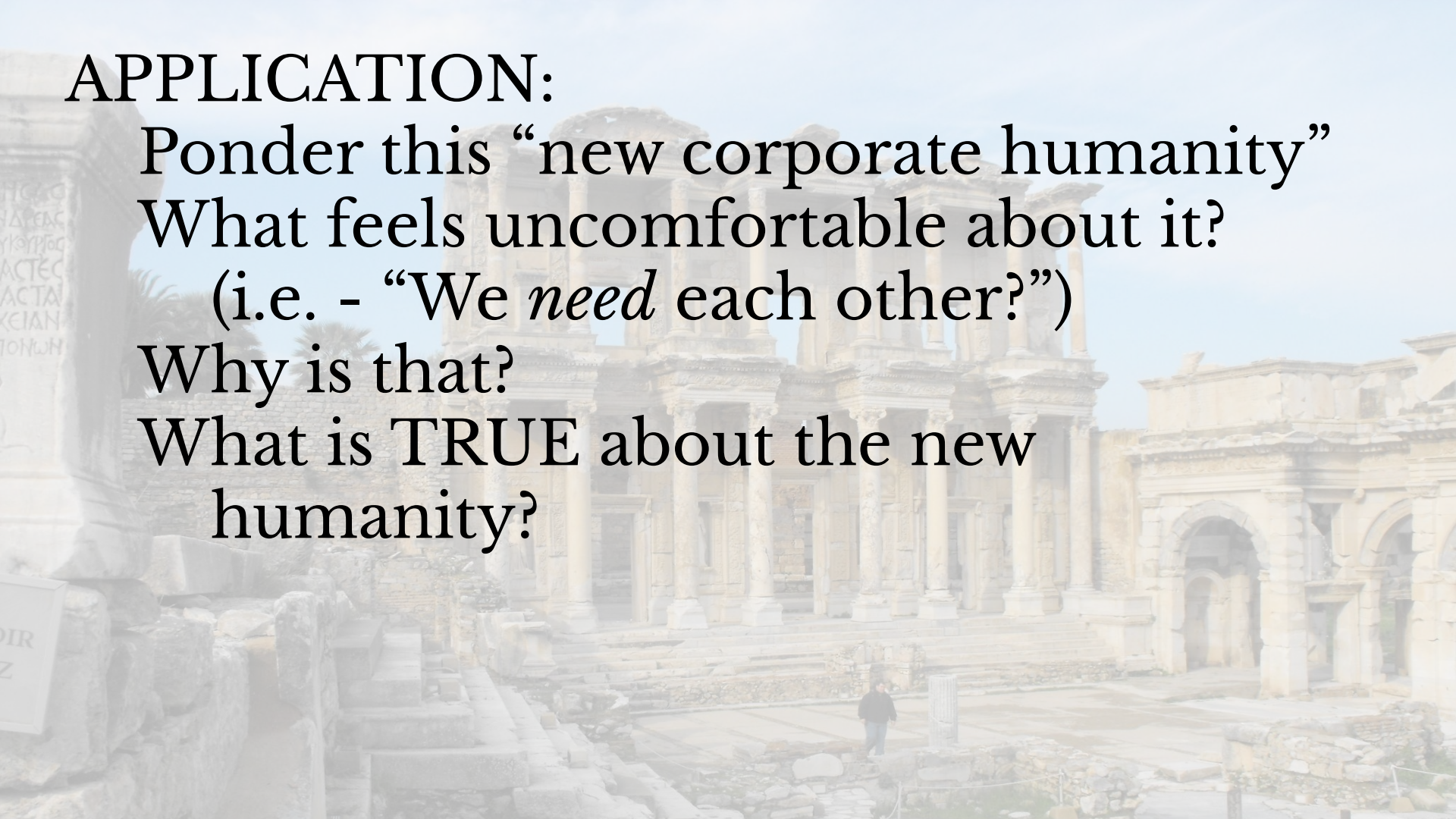
Ponder this “new corporate humanity”

What feels uncomfortable about it?

(i.e. - “*We need each other?*”)

Why is that?

What is TRUE about the new  
humanity?





# APPLICATION:

Ponder this “new corporate humanity”

What feels uncomfortable about it?

(i.e. - “*We need each other?*”)

Why is that?

What is TRUE about the new  
humanity?

How do you feel about all of that?





